

General Index.

For Numerical Index see page 1104.

For Ornamental Hardware arranged alphabetically by *Designs* see page 244,
and by *Schools* see page 236.

Description.	Pages.	Description.	Pages.
A			
Adjusters, Casement	778-781	Bevel of Doors	163-167
Allowance for Finishing Hardware	1063	Bit of History, A.	65-70
Apartment House Letter Boxes	800	Blank Forms, Specifica- tions, etc.	994-1056
Architect and Client	230	Blount Door Check and Spring	786-788
Art Metal Work and Or- nament	226-612	Bolts, Barrel: Plain	763
Artist and Artisan	57-64	“ “ Ornamental 236-581	
Artistic Hardware	45-56	“ Bar Slide	820
Asylum Locks, Descriptive	218	“ Chain: Plain	764
“ “ and Latches 672-673		“ “ Ornamental 236-581	
Auxiliary Spring Attach- ment for Lever Handles	793	“ Cremorne: Plain	887-888
B			
Bank and Safe Locks	220-223	“ “ Ornamental 887-888	
Bar Sash Lifts: Plain	807	“ Cupboard: Plain	782-784
“ “ “ Ornamental 236-581		“ “ Ornamental 236-581	
“ Slide Bolts	820	“ Door: Plain . 630-632, 763	
Barrel Bolts: Plain	763	“ “ Ornamental . 236-581	
“ “ Ornamental 236-581		“ Espagnolette: Plain	771
Bars, Shutter: Plain	812	“ “ Ornamental	888
“ “ Ornamental 236-581		“ Extension: Plain	765-768
Bell Pulls: Plain.	763	“ “ Orna. 236-581, 888	
“ “ Ornamental 236-581		“ “ Dble. Mortise 767-768	
		“ Flush: Plain	769-770
		“ “ Ornamental 236-581	
		“ Foot: Plain	764
		“ “ Ornamental 236-581	
		“ Indicator	819
		“ Necked	763

Description.	Pages.	Description.	Pages.
B—Continued.			
Bolts, Sash	809	Catches, Screen Door	783
“ Square	763	“ Transom : Plain.	783
Book Case Fasteners	784	“ “ Orna. 236-581	236-581
Builder, The Province of the	1071	Ceiling Hooks	795
Builders' Locks, Grades of	117-120	Cellar Sash Fasteners	809
Butts, Descriptive	173-178	Chain Bolts : Plain	764
“ Cabinet : Plain	773	“ “ Ornamental 236-581	236-581
“ “ Ornamental 961-991	961-991	“ Door Fasteners	782
“ Fast Joint Surface	774	“ Transom	812
“ Loose Joint	774	Chest Locks	677
“ “ Pin : Plain	776-777	Cigar and Newspaper	
“ “ “ Orna. 236-581, 919	236-581, 919	Holders	820
“ Shutter : Plain	772	Clamp Hinges	819
“ “ Ornamental 236-581	236-581	Closet Door Lock-sets :	
Butt Tips : Ornamental	918	Plain 687-693	687-693
		“ “ Lock-sets :	
		Orna. 715-721	715-721
		“ Latches	820
		Coat and Hat Hooks : Plain 794-795	794-795
		“ “ “ “ Orna. 921	921
		Combined Cylinder Plates	
		and Ring Pulls	876
		“ Escutcheon and	
		Hinge Plates 868-869	868-869
		“ Escutcheon and	
		Kick Plates	872
		Communicating Door Lock-	
		sets : Plain	695
		“ Door Lock-	
		sets : Orna.	723
		Contracts, Forms of	1012-1021
		Corner Plates	847-866
		Corridor Door Lock-sets :	
		Plain 687-693	687-693
		“ “ “ Orna. 715-721	715-721
		Cremorne Bolts : Plain	887-888
		“ “ Orna. 887-888	887-888

Description.	Pages.	Description.	Pages.
C—Continued.			
Cupboard Bolts : Plain . . .	782,784	Door Springs, Checks and Stops, Descriptive . . .	201-206
“ “ Ornamental . . .	236-581	“ Stops	790-791
“ Catches : Plain.	782	Double Acting Hinges, De- scriptive	199-200
“ “ Ornamental	236-581	Drawer Knobs : Plain	796
“ Locks	674-675	“ “ Orna. 940,961-991	
“ Turns : Plain	785	“ “ Glass	947
“ “ Ornamental	236-581	“ Locks	675-676
Cup Escutcheons : Plain . . .	706-707	“ Pulls : Plain	938-939
“ “ Ornamental	904-906	“ “ Orna.	925-937D
Cut Glass Knobs	944-951	Drop Drawer Pulls : Plain . . .	938-939
Cylinder and Pin-Tumbler Locks, Descriptive	137-138	“ “ “ Orna. 925-937D	
Cylinders and Rings : Orna. . .	924	Duplex Dead Locks	668
D		“ Night Latches	667
Dead Locks : Duplex	668	“ Office “	669
“ “ Mortise	628-630	“ “ Locks	669
“ “ Rim	617-618	“ Sliding Door Latches	668
“ “ Sash	809	Dutch Door Trim, De- scriptive	145-146
Designs, alphabetically	244	E	
“ by Schools	236	Elbow Catches	784
Desk Locks	676,678	Elevator Sliding Door Latches	648
Detail Drawings for Hard- ware, Descriptive	1064	Emblematic Hardware	582
Door Bolts, Descriptive	179-180	Escutcheon Plates : Plain	703-705
Doors, Hand and Bevel of	163-167	“ “ Orna.	236-581
Door Check and Spring :	786-788	“ and Hinge Plates,	868-869
“ Fasteners, Chain	782	“ and Kick Plates	872
“ Knobs, Glass	944-951	“ Plates & Ring Pulls	876
“ Metal : Plain	708-709	“ Cup : Plain	906
“ “ “ Orna.	236-581	“ “ Orna.	904-906
“ Wood	709	Espagnolette Bolts : Plain	771
“ Knockers	873	“ “ Orna.	888
“ Pulls : Plain	827-828	Examples of Specifications	1022-1044
“ “ Ornamental	823-829		

Description.	Pages.	Description.	Pages.
E—Continued.			
Extension Bolts : Plain	765-768	Front Door Locks :	652-663
“ “ Orna. 236-581, 888		“ “ Lock-sets : Plain	683
		“ “ “ Orna.	711
F		G	
Factory Lock Equipment	1073	Gate Fixtures : Leeds	810
Fast Joint Butts : Plain	775	“ Latches : Secret	616
“ “ “ Orna.	236-581	Glass Knobs : Cut	944-951
“ “ Surface Butts	774	“ “ Door	944, 945
Fasteners, Bookcase	784	“ “ Drawer	947
Figures	880-884	“ “ Pressed	945-951
Finishes, Nomenclature of	609-612	“ “ Shutter	946-947
“ “ Standard ”	612	“ Trim, Descriptive	1075
Finishing Hdw., Allowance	1063	Glossary	11
Flaps, Shutter : Plain	773	Grades and Numbers of	
“ “ Orna. 236-581, 922		Y. & T. Hardware	1045-1056
Flush Bolts : Plain	769-770	Grades of Builders' Locks	117-120
“ “ Ornamental 236-581		Grammatical Propositions	1093
“ Pull Sliding Door		Grille Doors	867
Latches	648		
“ Rim Knob Bolts	818	H	
“ “ Locks	670-671	Hall Tree Hooks	794
“ Sash Lifts : Plain	808	Hallway Letter Boxes	801
“ “ “ Orna. 236-581, 916		Hand and Bevel of Doors	163-167
Foot Bolts : Plain	764	Handles, Lever : Plain	793
“ “ Ornamental	236-581	“ “ Orna. 878-879	
Forms of Contracts	1012-1021	“ T : Plain	792
“ “ Specifications	1001-1011	“ “ Orna. 236-581	
Frame Pulleys	791	Hardware, Drawings	1064
French Hardware	589	“ Expert, The	1069
“ Window Catches :		“ Emblematic	582
“ “ Plain	784	“ French	589
“ “ Orna. 236-581		“ Grades and	
Frictional Sash Fast	1079	Numbers of	1045
Front Door Locks : De-			
scriptive	142, 143		

Description.	Pages.	Description.	Pages.
H—Continued.		Hotel Keys, Tags for . . .	1077
Hardware, Hints for "Taking Off"	1066		
" Mechanics of . . .	103-224	I	
" Orna.	236-581, 734, 735	Index : Art Metal Work	
" Index by Designs . . .	244	and Ornament	226
" " " Schools . . .	236	" Cabinet Hardware . . .	962
" Plain	762-820	" " Locks	674
" Ratio of Cost	1063	" Contents of Parts	5
" Proprietary	586	" Hardware Groups	822
" Selection of	1059	" Locks and Latches	614
" Specifications	995-1000	" Lock - sets : Plain	681
Hardwood Floors	1091	" " " Orna.	681
Hat Hooks : Plain	794-795	" Mechanics of Hard-	
" " Ornamental	921	ware	104
Hinge and Esc'n Plates	868, 869	" Miscellaneous In-	
" Corner Plates	847-866	formation	1058
" Corner and Kick		" Narrative and His-	
Plates, Descriptive	207, 208	torical	38
Hinges, Clamp	819	" Numerical	1104
" Double Acting,		" Ornamental Hdw.	
Descriptive	199, 200	by Designs	244
History, A Bit of	65-70	by Schools	236
Historical	89-102	" Plain Hardware	762
Hook Sash Lifts : Plain	806	" Specifications	994
" " " Orna.	236-581	Indicator Bolts	819
Hooks, Ceiling	795	Inside Door Sets : Plain	687-693
" Coat and Hat	794-795, 921	" " " Orna.	715-721
" Hall Tree	794		
" Sash	804	K	
" Towel	795	Keys, Descriptive	139-141
Hotel Knob Locks	641-644	Key Bows, Special	1076
" Lock-sets : Plain	699	" Plates : Plain	705
" " " Orna.	727		
" and Office Locks,			
Descriptive	151-158		

Description.	Pages.	Description.	Pages.
K—Continued.			
Key Plates, Ornamental	952-956	Letter Boxes, Club	798
Kick and Escutcheon Plates	872	“ “ Hallway	801
“ Plates : Plain	801	“ “ Office Bldg.	798
“ “ Orna. 236-581, 870, 871		“ Hole Plates : Plain	797
Knob Latches, Mortise	622-626	“ “ “ Orna. 236-581, 917	
“ Locks, “	632-644	Letters	885-886
“ “ Rim	618-621	Lever Handles : Descriptive	1074
Knobs, Door. See Door Knobs.		“ “ and Plates : Plain	793
“ Drawer. “ Drawer “		“ “ “ “ Orna. 878-879	
“ Glass Glass “		“ “ Auxiliary Spring	793
“ Shutter Shutter “		Lifters, Transom	813-815
“ Thumb Thumb “		Lock Boxes : Post Office	224
“ and Spindles, Descriptive	168-172	Designing, Evolution in	88
Knockers, Door	873-876	Lock-making and Art Metal Work in America	39-44
L		Lock Primer, A	105-110
Latches, Asylum	672-673	Lock “ Trim ” and Lock “ Sets, ” Descriptive	161, 162
“ Cabinet Door	624	Locks and Latches	615-678
“ Closet	820	“ Asylum, Descriptive	218
“ Communicating Door	625-626	“ “	673
“ Elevator	648	“ Bank and Safe	220-223
“ Gate	810	“ Cabinet, Descriptive	216
“ Mortise Knob	622-626	“ “	674-678
“ “ Night	627, 667	“ Care of	1090
“ Rim Night	615-616	“ Chest	677
“ Secret Gate	616	“ Closet Door	617-641
“ Screen Door	624	“ Corridor Door	617-641
“ Shutter	810	“ Cupboard	674, 675
“ Sliding Door	648, 668, 810	“ Cylinder	137-138
“ Store Door	664-665	“ Dead, Mortise	628-630
“ Vestibule	653-663	“ “ Rim	617-618
Leeds Gate Fixtures	810	“ Desk	676, 678
Letter Boxes, Apartment	800	“ Drawer	675-676
		“ Duplex Dead	668
		“ “ Office	669
		“ Flush Rim	670-671

Description.	Pages.	Description.	Pages.
L—Continued.			
Locks, French Window	632-633	Lock-sets, Plain	682-709
“ Front Door, Descriptive	142-143	“ Orna.	710-731
“ Front Door	652-663	“ Glass Knob.	736, 737
“ Hotel and Office, Descriptive	151-158	“ Closet Door: Plain	687-693
“ Hotel	641-644	“ “ “ Orna.	715-721
“ Locker	675	“ Communicating Door: Plain	695
“ Master-keyed, Descriptive	121-126	“ Communicating Door: Orna.	723
“ Mortise Dead	628-630	“ Corridor Door: Plain	687-693
“ “ Front Door	652-663	“ “ Door: Orna.	715-721
“ “ Hotel	641-644	“ Front Door: Plain	683
“ “ Knob	632-644	“ “ “ Orna.	711
“ “ Office	645-646	“ Hotel “ Plain	699
“ “ Sliding Door	649-651, 670	“ “ “ Orna.	727
“ “ Store Door	664-666	“ Inside Door: Plain	687-693
“ Prison	219	“ “ “ Orna.	715-721
“ Residence Use, Descriptive	147-150	“ Office Door: Plain	701
“ Rim Dead	617-618	“ “ “ Orna.	729
“ “ Knob	618-621	“ Sliding Door: Plain	699
“ “ Store Door	617-618	“ “ “ Orna.	725
“ Room Door	617-641	“ S. D. Plain	702, 738-743
“ Sash	809	“ “ “ Orna.	730, 744-760
“ Sliding Door	649-651	“ Vestibule Door: Plain	685
“ Stable Door	662	“ “ “ Orna.	713
“ Sub-Treasury	674	Loose Joint Butts	774
“ Trunk, Descriptive	217	“ Pin “ Plain	776-777
“ Wardrobe	677	“ “ “ Orna.	236-581
“ Wrought Metal, Descriptive	127-136		
“ in Sets	680-760	M	
Lock-sets, Index of	681	Master-keyed Locks, Descriptive	121-126
		Master-keyed Locks	667-669
		Metals and Finishes	595-612

Description.	Pages.	Description.	Pages.
M—Continued.		P	
Method of Pricing	33	Padlocks	215
Minor Fastenings, Descrip.	196-198	Pivoted Window Trim, Descriptive	214
Mortise Aylum Locks . . .	672-673	Plain Hardware	762-820
“ Dead “	628-630	Plates, Cylinder and Ring Pulls combined	876
Mortise Door Bolts : Plain 630-632, 763		“ Escutcheon : Plain	705
“ “ “ Orna. 236-581		“ “ Orna. 236-581	
“ Front Door Locks 652-663		“ Hinge and Corner : 847-866	
“ Hotel Locks	641-644	“ Key : Plain	705
“ Knob Latches	622-626	“ “ Ornamental 952-956	
“ “ Locks	632-641	“ Kick : Plain	801
“ Night Latches	627, 667	“ “ Orna.	870-871
“ Office Locks	645-647	“ “ and Esc'n	872
“ Sliding Door Locks 649, 651, 663, 670		“ Letter Hole : Plain	797
“ Store Door Locks 664-666		“ “ “ Orn. 236-581, 917	
“ Vestibule Latches 653-663		“ Lever Handle: Plain	793
		“ “ “ Orna. 236-581	
		“ Push : Plain	802-803
		“ “ Orna. 236-581, 923	
		“ Switch	920
		“ T Handle : Plain	792
		“ “ Orna. 236-581	
		“ Thumb-Piece: Plain	792
		“ “ “ Orna. 236-581	
		Post Office Lock Boxes	224
		Pricing, Method of	33
		Prison Locks	219
		Proprietary Hardware	586-588
		Province of the Builder	1071
		Pulleys, Frame	791
		“ Sash	791
		Pulls, Drawer : Plain	938-939
		“ “ Orna.	925-937D
		Push Buttons : Plain	897
		“ “ Orna.	895-897
N			
Nails and Studs	877		
Necked Bolts	763		
Night Latch and Lock, Rim	622		
“ Latches, Duplex	667		
“ “ Mortise	627, 667		
“ “ Rim	615-616		
Nomenclature of Finishes	609-612		
Numerical Index	1104		
O			
Office Latches, Mortise	646-647		
“ Locks, Duplex	669		
“ “ Mortise	645, 646		
“ Lock-sets : Plain	701		
“ “ Orna.	729		

Description.	Pages.	Description.	Pages.
P—Continued.			
Push Plates: Plain	802-803	Sash Sockets, Orna.	236-581
“ “ Orna.	236-581, 923	“ Trim, Descriptive	181-184
R		Sashes, Weights	1087
Relation between Hardware		Schools of Ornament	235-612
and Art	226	“ “ Index	236
Rim Dead Locks	617-618	Screen Door Catches	783
“ Knob Bolt: Flush	818	Secret Gate Latches	616
“ “ Locks	618-621	Selecting Hardware, De-	
“ Night Latches	615-616	scriptive	1059
“ “ Latch and Lock	622	Shutter Bars: Plain	812
“ Sash Lifts: Plain	807	“ “ Orna.	236-581, 922
“ “ “ Orna.	236-581	“ Butts: Plain	772
“ Store Door Dead Locks	617-618	“ “ Orna.	236-581, 922
Ring Pulls and Cylinder		“ Knobs: Plain	796
Plates	876	“ “ Orna.	940
Roller Top Desk Locks	678	“ “ Glass	946
Room Door Sets: Plain	693	“ Flaps: Plain	773
“ “ “ Orna.	715-721	“ “ Orna.	236-581, 922
S		“ Latch	810
Sash Bolts	809	“ Trim, Descriptive	189-191
“ Centers	805	Signs	811
“ Dead Lock	809	Slide Bolts, Bar	820
Sash Fast: Plain	806	Sliding Door Hangers	211-213
“ “ Orna.	236-581	“ “ Latches	810
“ “ Frictional, De-		“ “ “ Duplex	668
scriptive	1079	“ “ “ Elevator	648
“ Hooks	804	“ “ “ Flush Pull	648
“ Lifts: Plain	806-808	“ “ Locks, 649, 651, 663, 670	
“ “ Orna.	236-581	“ “ Sets, Plain	697
“ Pulleys	791	“ “ “ Orna.	725
“ Spring Lock	809	Specifications, etc.	994
“ Sockets: Plain	804	“ Examples of	1022
		“ Forms of	1001
		Square Bolts	763
		Stable Door Knob Lock	662
		Standard Finishes	612
		Stops, Door	790-791

Description.	Pages.	Description.	Pages.
S—Continued.			
Store Door Dead Locks, Rim	617-618	Transom Trim, Descrip.	193-195
“ “ Locks, Mortise	664-666	Trim for Special Conditions	209
“ “ Sets: Plain	702, 738-743	Trunk Locks: Descriptive	217
“ “ “ Orna.	730, 744-760	T-Handles: Plain . . .	792
“ “ Trim, Descrip.	159-160	“ “ Orna. . .	236-581
Story of an American		Turnbuckles: Mortise .	817
Industry	79-87	“ Rim . . .	816
Studs and Nails	877	Turns, Cupboard: Plain .	785
Sub-Treasury Locks . . .	674	“ “ Orna.	236-581
Surface Butts, Fast Joint .	774	Typical Lock-sets . . .	681-731
Switch Plates	920		
T		V	
Tags for Hotel Keys . . .	1077	Vestibule Door Sets: Plain	685
Taking Off Hardware . . .	1066	“ “ “ Orna.	713
Thumb Knobs: Plain . . .	796	“ Latches . . .	653-663
“ “ Orna.	236-581		
“ Pieces: Plain . . .	792	W	
“ “ Orna.	236-581	Wardrobe Locks	677
Towel Hooks	795	Water Closet Trim	818-820
Transom Catches: Plain	783	Weight of Sashes	1087
“ “ Orna.	236-581	Window Catches, French: Plain	784
“ Centers	805	“ “ “ Orna.	236-581
“ Chains	812	Wrought Metal Locks . . .	127
“ Lifters	813-815		
		Y	
		Yale Lock, The	71- 78

Numerical Index.

For Alphabetical Index see page 1094.

All Catalogue Numbers of Locks and Hardware used in this volume, unless otherwise specified, are those of the Yale & Towne Manufacturing Company. The Numerical Index below will enable any article, catalogue number of which is known, to be found conveniently.

In the case of Hardware the list numbers indicate mechanical qualities, not design, (and also, usually, size), and apply both to plain and ornamental goods. If used alone the numbers indicate plain bronze or brass hardware; if applied to ornamental hardware the number must invariably be followed by the *name of the design*.

A list of Designs, alphabetically arranged, will be found on page 244; all articles in the "Cluny" design (selected as typical) are included in the numerical list under their proper numbers, and as "Ornamental."

Lock-sets with Plain Trim are described on pages 682 to 702, and are indexed under the list numbers of the locks (not of the lock-sets).

Lock-sets with Ornamental Trim are described on pages 710 to 731, and in the "Cluny" design are indexed numerically under the title "Ornamental."

The Yale & Towne system of finish symbols is explained on pages 609 to 612, and the desired finish must always be indicated in specifications.

No.	Description.	Page.	No.	Description.	Page.
0P	Club Letter Box . . .	799	5	Thumb-piece and Plate	792
1	Blount Door Check . . .	787	6	Blount Door Check . . .	787
	Thumb-piece and Plate . . .	792	7	T-Handle and Plate . . .	792
1P	Club Letter Box . . .	799	8	Lever Handle and Plate	793
2	Blount Door Check . . .	787		T-Handle and Plate . . .	792
	Hallway Letter Box. . .	801	W8¼	Cup Escutcheon. . . .	706
2P	Club Letter Box . . .	799	9	T-Hdl & Plate, Plain.	792
2½P	" " "	799		" " " Orna.	735
3	Blount Door Check . . .	787	10	Lever Handle and Plate	793
	Hallway Letter Box . . .	801		T-Handle and Plate . . .	792
4	Blount Door Check. . .	787	11	Lever Handle and Plate	793
	Lock, Rim Dead	618	12	" " "	793
	Thumb-piece and Plate . . .	792		Lock, Rim Dead	618
5	Blount Door Check . . .	787	13	Door Knob.	708

No.	Description.	Page.	No.	Description.	Page.
13	Lever Handle & Plate	793	50	Shutter Flap . . .	773
W13	Door Knob	708	WA 50	Key Blank,	678
13 1/2	" "	708	50B	Shutter Flap	773
W13 1/2	" "	708	W52	Door Knob	709
14	Door Knobs	708	52N	Latch, Rim Night	616
	Lever Hdl and Plate	793	54	" " "	615
W14	Door Knob	708	55	Door Knob, Orna.	734
15	" "	708	W55	" "	708
15 1/2	" "	708	55 1/2	" " Orna.	734
16	" "	708	W55 1/2	" "	708
19	Cup Escutcheon	707	56	" " Orna.	734
19 1/4	" "	707	W56	" "	708
32	Lock, Rim Dead	617	58	Sliding Door Pull	789
33	Lever Hdl and Plate	793	60	Door Knob	709
34	" " "	793		Shutter Flap	773
35	" " "	793	60B	" "	773
	Lever Handles, Orna.	879	66	Latch, Mortise	
W39	Door Knob	709		Night	627
W39 1/2	" "	709	66G	Asylum Latch	672
40	Door Pull	827	66N	Latch, Mortise N't	627
W40	" Knob	709	66R	" " "	627
41	" Pull	827	66S	" " "	649
o 42	Latch, Rim Night	615	68	Sliding Door Pull	789
42	Door Pull	827	70	Door Knob	709
	Latch, Rim Night	615	PA73	Cupboard Lock	674
42 1/2	Door Pull	827	PA74	" "	674
43	Door Pull, Plain	827	75	Extension Bolt	765
	" " Orna.	823	PA75	Cupboard Lock	674
45	" " Plain	827	PA76	" "	674
	" " Orna.	823	78	Sliding Door Pull	789
45S	" " "	827	PA79	Cupboard Lock	674
46	" " Plain	827	80	Door Knob	709
47	" " "	827	PA80	Cupboard Knob	674
	" " Orna.	823	81	Extension Bolt	765
47F	" " Plain	827	PA81	Cupboard Lock	674
48	" " "	828	84	Hook Sash Lift	806
49	" " "	828	85	Door Knob	709
	" " Orna.	823	85 1/2	" "	709

No.	Description.	Page.	No.	Description.	Page.
86	Door Knob . . .	709	B166	Transom Lifter .	815
88	Sliding Door Pull.	789	167	Latch, Mortise Night	627
90	Square Cased Bolt	763	B167	Transom Lifter .	815
91	Hook Sash Lift .	806	B168	“ “ .	815
	Mortise Door Bolt	763	175	Drawer Pull . .	938
92	“ “ “	763	180	“ “ . .	938
93	Square Cased Bolt	763	RA180	Drawer Lock . .	676
94	“ “ “	763	RA181	“ “ .	676
95	Mortise Door Bolt	763	183	Espagnolette Bolt .	771
96	“ “ “	763	184	Extension Bolt . .	767
WA 102	Wardrobe Lock. .	677	185	Espagnolette Bolt .	771
WA 103	“ “ . .	677	186	Extension Bolt . .	768
PI18	Mortise Knob Latch	624	188	“ “ . .	768
PI18 ¹ / ₂	“ “ “	625	215	Bar Sash Lift. . .	807
WI20	Door Knob . . .	709	222	Door Pull, Orna .	823
WA 120	Wardrobe Lock. .	677	225	“ “ Plain	828
B143	Transom Lifter. .	815	S230	Desk Lock . . .	676
B144	“ “ .	815	W230	Shutter Bar, Plain	812
146F	Door Pull. . . .	828	234S	Lock, Front Door	663
147	Fast Joint Butt .	775	234 ¹ / ₂	“ “ “ .	660
	Door Pull, Plain .	828		“ Plain Trim	683
	“ “ Orna .	823		“ Orna. “	711
148	“ “ Plain .	828	234 ¹ / ₂ R	“ Front Door	660
	“ “ Orna .	823	236 ¹ / ₂	“ “ “	661
150	Shutter Butt . . .	772	B243	Transom Lifter .	815
150B	“ “ . . .	772	B244	“ “ .	815
SA151	Chest Lock . . .	677	244 ¹ / ₂ S	Lock, Sliding Door	662
SA152	“ “ . . .	677	247	Door Pull, Plain .	828
B153	Transom Lifter. .	815	250	Loose Joint Butt .	774
SA153	Chest Lock . . .	677	S250	Desk Lock . . .	678
B154	Transom Lifter. .	815	B253	Transom Lifter .	815
SA154	Chest Lock . . .	677	B254	“ “ .	815
B155	Transom Lifter. .	815	B255	“ “ .	815
B156	“ “ .	815	B256	“ “ .	815
160	Cabinet Butt. . .	773	260	Parliament Butt .	774
160B	“ “ . . .	773	265	Fast Joint Butt .	774
B165	Transom Lifter .	815		Surface Butt . .	819
166	Latch, Mortise N't	627	B265	Transom Lifter .	815

No.	Description.	Page.	No.	Description.	Page.
B266	Transom Lifter .	815		S.D. Handle, Plain	741
B267	“ “ .	815	318B	“ “ “	741
B268	“ “ .	815	320	“ “ “	743
269	Clamp Hinge . .	819	322	Door Pull, Orna.	823
270	Parliament Butt .	774	S322	“ “ Plain .	828
RA272	Sub-Treasury Lock	674	W322	“ “ “ .	828
274S	Latch, Vestibule .	663	324	“ “ “ .	828
274 ¹ / ₂	“ “ .	660	332	S.D. Handle, Plain	739
	“ Plain Trim	685		“ “ Orna.	735
	“ Orna. “	713	332B	“ “ Plain	739
274 ¹ / ₂ R	“ “ .	660	332S	“ “ “	739
279	Clamp Hinge and Spring	819	333	“ “ “	739
280	Flush Bolt . . .	770	334	“ “ “	739
281	“ “	770		Lock, Mortise Dead	629
283	“ “	770	344N	“ “ “	629
	Drawer Pull . .	938	344R	“ “ “	629
286	“ “	938	344S	“ “ “	649
290	Necked Bolt . .	763	347	Door Pull, Plain .	828
291	“ “	763	348	Lock, Mortise Dead	629
292	“ “	763	350	Fast Joint Butt . .	775
294	Square Bolt . . .	763	368	Lock, Rim Dead .	617
304	Lock, Mortise Dead	630	380	Extension Bolt . .	765
304R	“ “ “	630	383	“ “	765
304S	Sliding Door Dead	649	384	“ “	767
310	S.D. Handle, Plain	741	RA390	Drawer Lock . .	676
	“ “ Orna.	745	400	Sash Socket . . .	804
R310	Drawer Lock . .	676	410	“ “	804
310B	S. D. Handle . . .	741	412	“ “	804
314	Coat & Hat Hook	794	413	Coat and Hat Hook	794
	S.D. Handle, Plain	741	414	Lock, Store Door	665
	“ “ Orna.	745		“ Plain Trim	702
314B	“ “ Plain	739		“ Orna. “	730
315	“ “ Plain	743	414R	“ Store Door	665
	“ “ Orna.	735	432	“ “ “	665
315B	“ “ Plain	743		“ “ Pl. Trim	739
315S	“ “ Plain	743		“ “ Orna. Trim	745
318	Lock, Mortise Dead	630	432R	“ Store Door .	665

No.	Description.	Page.	No.	Description.	Page.
442	Door Pull, Plain . . .	828	513	Cupboard Lock. . .	675
454	Lock, Store Door . . .	666	513S	" " . . .	675
454R	" " " . . .	666	515	Coat and Hat Hook .	794
466	Latch, Mortise Night .	627	530	Screen Door Catch .	783
466G	" Asylum . . .	672	531	" " " . . .	783
466R	" Mortise Night .	627		Locker Lock . . .	675
476G	" Asylum . . .	672	532	Screen Door Catch .	783
480	Flush Bolt	769	533	Locker Lock . . .	675
480 ³ / ₄	" "	769	S543	Transom Lifter . . .	815
481	" "	769	S544	" " . . .	815
482	" "	769	S553	" " . . .	815
483	" "	769	S554	" " . . .	815
484	" "	769	S555	" " . . .	815
485	" "	769	S556	" " . . .	815
493	" "	770	562	Drawer Lock . . .	675
494	" "	770	S565	Transom Lifter . . .	815
499	Cupboard Turn . . .	785	S566	" " . . .	815
499 ¹ / ₂	" "	785	S567	" " . . .	815
500	" "	785	S568	" " . . .	815
500 ¹ / ₂	" "	785	571	Drawer Lock . . .	675
501	" Lock.	675	573	" " . . .	675
	" Turn	785	581	Flush Bolt	770
502	" "	785	582	" "	770
502 ¹ / ₂	" "	785	583	" "	770
503	" "	785	584	" "	770
505	" Lock	675	600	Latch, Mortise Office	647
	French Window Catch .	784	605	Transom Catch . . .	783
507	Cupboard Lock	675	614	Lock, Office	645
510	" "	675		" Plain Trim . . .	701
	French Window Catch .	784		" Orna. " . . .	729
510S	Cupboard Lock.	675		S.D. Handle, Plain .	743
511	" "	675	625	Chain Door Fastener	782
511S	" "	675	R625	Key Blank, Orna. . .	678
512	" Catch.	782	S643	Transom Lifter . . .	815
	" Lock	675	S644	" "	815
512S	" "	675	650	Extension Bolt . . .	765
513	Coat and Hat Hook . .	794	S653	Transom Lifter . . .	815
	Cupboard Catch	782	654	Lock, Office	645

No.	Description.	Page.	No.	Description.	Page.
S654	Transom Lifter .	815	736	Lock, Front Door	661
S655	“ “ .	815	745	Letter Hole Plate	797
656	Latch, Office . .	646	747	“ “ “	797
S656	Transom Lifter .	815	749	“ “ “	797
656H	Latch, Office . .	646	750	Lock, Front Door	656
	“ Plain Trim	701		“ Plain Trim	683
	“ Orna. “	729		“ Orna. “	711
658	Lock, Front Door	662		Loose Pin Butt .	777
660	“ Office . .	646	750AF	Lock, Front Door	656
S665	Transom Lifter .	815	750R	“ “ “	657
S666	“ “ .	815	750RAF	“ “ “	657
S667	“ “ .	815	RA754	Key Blank . .	678
S668	“ “ .	815	756	Lock, Rim Knob	620
681	Extension Bolt .	765	RA764	Key Blank. . .	678
	Lock, Rim Knob	619	766	Latch, Vestibule	658
681 1/2	“ “ “	619	766AF	“ “	658
683	Extension Bolt .	765	766R	“ “	659
688	“ “ .	765	766RAF	“ “	659
700	Rim Cupb'd Bolt	784	770	Latch, Office . .	647
701	“ “ “	784		Lock, Plain Trim	701
702	“ Dead Lock	617		“ Orna. “	729
705	Cupboard Bolt .	782		Shutter Knob. .	796
712	Rim Dead Lock	617	770H	Latch, Office . .	647
713	Ceiling Hook . .	795	RA773	Key Blank. . .	678
714	“ “ . .	795	780	Loose Pin Butt .	777
	S.D. Hdle, Plain	74	781	Extension Bolt .	765
RA715	Key Blank . . .	678	782	Rim Night Latch and Lock . . .	622
720	Ceiling Hook . .	795	783	Extension Bolt .	765
RA724	Key Blank . . .	678	785	Fast Joint Butt .	775
726	Lock Front Door	658	RA785	Key Blank . . .	678
726AF	“ “ “	658	788	Ext. Bolt, Plain .	765
726R	“ “ “	659		“ “ Orna .	734
726RAF	“ “ “	659	790	Latch, Vestibule .	656
732	“ Store Door	666		“ Plain Trim	685
	“ Plain Trim	702		“ Orna. “	713
	“ Orna. “	730	790AF	“ Vestibule .	656
732R	“ Store Door	666	790R	“ “	657
RA734	Key Blank . .	678			

No.	Description.	Page.	No.	Description.	Page.
	790RAF Latch, Vestibule . . .	657	894	Cremorne Bolt . . .	887
RA793	Key Blank.	678	895	“ “ . . .	887
800	Cup Escutcheon . . .	707	896	“ “ . . .	888
802	Key Plate, Orna. . .	735	900	Sliding Door Stop . . .	789
803	“ “ “ . . .	735	RA900	Key Blank, . . .	678
804	“ “ “ . . .	735	901	Sliding Door Stop . . .	789
RA804	Key Blank, “ . . .	678	910	Sash Lock	809
805	Key Plate, “ . . .	735	912	“ “	809
806	“ “ “ . . .	735	914	“ “	809
810	Cup Escutcheon . . .	707	915	Card Frame	792
811	“ “ . . .	707		Sash Bolt	809
RA814	Key Blank	678	916	Card Frame	792
818	Frame Pulley	791	917	“ “	792
819	“ “	791		Locking Latch	624
820	“ “	791	918	Card Frame	792
824	Cup Escutcheon . . .	707	919	“ “	792
RA824	Key Blank	678	0967	Lock, Rim Knob	620
827	Cup Escutcheon . . .	707	0967 ¹ / ₂	“ “ “	620
841	Rim Night Latch . . .	616	988	Extension Bolt	766
845	Letter Hole Plate . . .	797	990	Flush Ring Pull	939
847	“ “ “	797	991	“ “ “	939
849	“ “ “	797	1000	Drawer Knob	796
850	Cup Esc'n, Plain . . .	706		Latch, Mortise Knob	623
	“ “ Orna.	904	1000R	“ “ “	623
854	“ “ Plain	706	1001	“ “ “	623
	“ “ Orna.	734	1002	“ “ “	623
855	“ “ Plain	707	1004	“ “ “	623
881	Espag'te Bolt, “ . . .	771	1005	Drawer Knob	796
	“ “ Orna.	888	1008	Latch, Mortise Knob	623
882	“ “ Plain	771	1009	“ “ “	623
	“ “ Orna.	888	1010	“ “ “	623
883	“ “ “	888	1012	Dead-Locking Latch	624
884	Extension Bolt	767	1040	Druggist Drawer Pull	939
887	“ “	767	1041	“ “ “	939
888	“ “	766	1047	Mortise Bolt	632
889	“ “	767	1048	“ “	631
892	“ “	766	1049	“ “	631
893	Cremorne Bolt,	887	1050	“ “	632

No.	Description.	Page.	No.	Description.	Page.
W1052	Drawer Pull	938	1109	Door Stop	790
W1053	" "	938	1110	" "	790
W1054	" "	938	1111	" "	791
W1056	" "	938	1112	" "	791
W1057	" "	938	1112½	" "	791
W1058	" "	938	1122	Latch, Store Door . . .	664
1060	Mortise Bolt	631		" Plain Trim	743
1061	Drawer Pull	938		" Orna. "	731
1062	" "	938	1125	Door Stop	789
1065	" Knob, Orna.	734	1175	Bookcase Fastener. . .	784
1067	Rim Turnbuckle	816	1178	Mortise Turnbuckle . . .	817
1067½	" "	816	1178R	" "	817
1068	" "	816	1179	" "	817
1068½	" "	816	1179R	" "	817
1069	" "	816	1181	Cupboard Catch	782
1072	" "	816	1184	Transom Catch	783
1073	" "	816	1186	" "	783
1074	" "	816	1187	" "	783
1075	Slide Bolt	820	1188	" "	783
1076	Closet Latch	820	1189	" "	783
1078	Mortise Turnbuckle	817	1190	Elbow Catch	784
1079	" "	817	1191	" "	784
1080	" "	817	1193	" "	784
1081	Rim Turnbuckle	816	1199	Drop Drawer Pull	939
1086	Indicator Bolt	819	1200	Bell Pull, Orna	734
1087	" "	819		Lock, Mortise Dead . . .	629
1088	Cigar & Newsp'r Holder	820	1204	" " "	628
1089	Cupboard Turn	785	1213	Bell Pull	763
1089½	" "	785	1217	" "	763
1092	Drawer Pull	938	1255	" "	763
1094	" "	939	1285	" "	763
1099	" " Orna.	734	1299	Drawer Pull	938
1103	Door Stop	790	1300	Lock, Mortise Dead . . .	628
1104	" "	790		Shutter Knob	796
1105	" "	790	1305	" "	796
1106	" "	790	1308	Lock, Mortise Dead . . .	628
1107	" "	790	1315	Sash Center	805
1108	" "	790	1321	Shutter Knob, Orna. . .	940

No.	Description.	Page.	No.	Description.	Page.
W1324	Flush Sash Lift . . .	808	1371	Sash Fast	806
1325	“ “ “ . . .	808	1372	“ “	806
1330	Transom Chain . . .	812	1376	“ “	806
1332	“ “	812	1379	Casement Adjuster .	778
1333	“ “	812	1381	Shutter Bar, Plain .	812
1335	Sash Center	805	1382	“ “ “	812
1339	Hook Sash Lift . . .	806		“ “ Orna.	735
1340	Lock, Mortise Dead	628	1383	“ “ Plain	812
1342	Hook Sash Lift . . .	806	1384	“ “ “	812
1344	Flush Sash Lift, Orna.	734	1385	“ “ “	812
	“ “ “ Plain	808	1386	Casement Adjuster .	778
1344B	“ “ “ “	808	1387	“ “	781
1344L	“ “ “ “	808	1388	“ “	778
	“ “ “ Orna.	734	1390	“ “	781
1345	Sash Center	805		Rim Sash Lift	807
1347	Flush Sash Lift, Plain	808	1391	Casement Adjuster .	779
1347B	“ “ “ “	808	1392	“ “	780
1349	“ “ “ “	808	1393	“ “	779
1349	“ “ “ Orna.	734	1394	“ “	779
1349B	“ “ “ Plain	808	1395	“ “	780
1349L	“ “ “ “	808	1396	“ “	780
1351	Sash Socket, Orna. .	735	1397	“ “	778
1352	“ “ Plain	804	1398	“ “	779
1353	“ “ “	804	1399	“ “	781
1354	“ “ “	804	1399 ^{1/2}	“ “	781
1355	Sash Center	805	W1400	Sash Fast	806
1358	Sash Hook	804	1402	Lock, Mortise Knob	641
1359	“ “	804		“ Plain Trim	693
1360	Bar Sash Lift, Orna.	734		“ Orna. “	721
1362	“ “ “ Plain	807	1404	Latch, Mortise Knob	626
	“ “ “ Orna	734	1410	Push Button, Plain	897
1364	“ “ “ Plain	807	1413	“ “ “	897
1365	“ “ “ “	807		“ “ Orna.	895
1367	Door Pull, Plain . . .	828	1415	“ “ Plain	897
1368	“ “ “	828		“ “ Orna.	895
	Drawer Pull	939	1416	“ “ Plain	897
1369	“ “	939		“ “ Orna.	895
	Door Pull	828	1420	Lock, Mortise Knob	637

No.	Description.	Page.	No.	Description.	Page.
1420	Lock, Plain Trim . . .	689	1604	Coat and Hat Hook . . .	795
	“ Orna. “ . . .	717	1606	Towel Hook	795
1425	Door Knocker, Orna.	873	1607	“ “	795
1440	Lock, Mortise Knob . . .	639	1608	Coat and Hat Hook . . .	794
	“ Plain Trim . . .	691	1610	Hall Tree Hook . . .	794
	“ Orna. “ . . .	719	1612	“ “ “	794
1442	“ Mortise Knob . . .	639	1613	Coat and Hat Hook . . .	795
	“ Plain Trim . . .	691	1614	Lock, Mortise Office . . .	645
	“ Orna. “ . . .	719		“ Plain Trim . . .	701
1445	“ Mortise Knob . . .	640		“ Orna. “ . . .	729
1460	“ “ “ . . .	637	1620	Flush Bolt	769
1463	Bar Sash Lift	807		Lock, Mortise Knob . . .	635
1475	Lock, Mortise Knob . . .	637		“ Plain Trim . . .	687
1481	Cupboard Catch	782		“ Orna. “ . . .	715
1485	“ “	782	1620N	“ Mortise Knob . . .	634
1486	“ “	782	1640	“ “ “	632
1500	Lock, Mortise Knob . . .	636	1640R	“ “ “	632
	“ Plain Trim . . .	689	1643	“ “ “	633
	“ Orna. “ . . .	717	1644	“ “ “	633
1504	“ Mortise Knob . . .	626	1645	“ “ “	633
	“ Plain Trim . . .	695	1645R	“ “ “	633
	“ Orna. “ . . .	723	1654	“ “ Office	645
1505	Letter Hole Plate . . .	797	1660	Chain Bolt	764
	Latch, Mortise Knob . . .	625	1661	“ “	764
	“ Plain Trim . . .	695	1662	“ “	764
	“ Orna. “ . . .	723	1663	“ “	764
1505 1/2	Letter Hole Plate . . .	797	1664	“ “	764
1506	“ “ “ Plain . . .	797	1665	“ “	764
	“ “ “ Orna.	735	1670 1/2	Lock, Hotel Knob . . .	642
1506 1/2	“ “ “ Plain . . .	797	1671 1/2	“ “ “	642
	“ “ “ Orna.	735	1672	Foot Bolt.	764
1507	“ “ “ Plain . . .	797	1674	“ “	764
	“ “ “ Orna.	735	1675	“ “	764
1508	Lock, Asylum	673	1680	Barrel Bolt	763
	Letter Hole Plate . . .	797		Lock, Hotel Knob . . .	642
1508 1/2	“ “ “	797		“ Plain Trim . . .	699
1510	Lock, Asylum	673		“ Orna. “ . . .	727
1603	Coat and Hat Hook . . .	795	1680 1/2	“ Hotel Knob . . .	642

No.	Description.	Page.	No.	Description.	Page.
1682	Barrel Bolt	763	1741	Door Pull, Plain .	828
1684	“ “	763	PI742	Latch, Vestibule .	653
1685	Lock, Hotel Knob	643	“	Plain Trim	685
	“ Plain Trim	699	“	Orna. “	713
	“ Orna. “	727	PI742AF	“ Vestibule	653
1690	“ Hotel Knob	643	PI742R	“ “ “	653
1695	“ “ “	644	PI743	“ “ “	653
	“ Plain Trim	699	“	Plain Trim	685
	“ Orna. “	727	“	Orna. “	713
1696	“ Hotel Knob	644	PI743AF	“ Vestibule .	653
1697	“ “ “	644	PI743R	“ “	653
1698	“ “ “	644	1747	Push Plates . . .	803
1699	“ “ “	644	1770	Lock, Rim Knob	621
PI700R	Latch, Mortise Knob	624	PI766	Mortise Bolt . . .	630
1704	Lock, Sliding Door	651	1780	Lock, Flush Rim	670
1704 ^{1/2}	“ “ “	651		Rim Knob Bolt .	818
PI705	Latch, Mortise Knob	622	1782	Lock, Flush Rim	671
1706	Lock, Sliding Door	650	1783	“ Rim Knob	621
	“ Plain Trim	697	1784	“ Flush Rim	671
	“ Orna. “	725	1785	“ “ “	670
PI706	Latch, Mort. Knob	622	1792	Latch, Elevator .	648
1706 ^{1/2}	Lock, Sliding Door	650	PI793	Lock, Hotel . . .	641
	“ Plain Trim	697	“	Plain Trim	699
	“ Orna. “	725	“	Orna. “	727
1708	Locking Latch . .	810	PI842	“ Front Door	652
1710	“ “	810	“	Plain Trim	683
1715	Flush Bolt	769	“	Orna. “	711
1720	Flush Rim Lock .	671	PI842AF	“ Front Door	652
PI722	Lock, Mort. Knob	634	PI842R	“ “ “	652
1724	“ Sliding Door	651	PI843	“ Front Door	652
1726	“ “ “	650	“	Plain Trim	683
	“ Plain Trim	697	“	Orna. “	711
	“ Orna. “	725	PI843AF	“ Front Door	652
1730	Push Plate, Plain.	803	PI843R	“ “ “	652
	“ “ Orna.	735	1876	“ Sliding D'r	670
1735	“ “ Plain	803	PI902 ^{1/2}	Latch, “ “	648
1737	Push Plate, Plain	803	PI904 ^{1/2}	“ “ “	648
1740	Door Pull, “	828	PI905 ^{1/2}	“ “ “	648

No.	Description.	Page.	No.	Description.	Page.
P1918	Lock, Mort. Knob	635	P2430	Lock, Mort. Knob	636
	“ Plain Trim	687		“ Plain Trim.	689
	“ Orna. “	715		“ Orna. “	717
P1918 ³ / ₄	“ Mort. Knob	635	2513	Coat & Hat Hook	795
	“ Plain Trim	687	2516	“ “ “	795
	“ Orna. “	715	P2530	Lock, Mort. Knob	638
2000 ¹ / ₂	“ Front Door	655		“ Plain Trim	691
2013	Thumb Knob .	796		“ Orna. “	719
2013 ¹ / ₂	“ “ .	796	P2533	“ Store Door	664
2014	“ “ .	796		“ Plain Trim	741
2015	“ “ .	796		“ Orna. “	731
2020	Latch Sets, Plain	743	P2533AF	“ Store Door	664
2024	Thumb Knob .	796	P2533R	“ “ “	664
2025	S. D. Hdl., Plain	743	P2533RAF	“ “ “	664
P2025	Latch, Store Door	665	P2535	“ Mort. Knob	641
P2025R	“ “ “	665		“ Plain Trim	693
P2036AF	Lock “ “	665		“ Orna. “	721
P2036RAF	“ “ “	665	2550	Sash Fast . . .	806
2047	Loose Pin Butt .	776	2614	S. D. Hdl., Plain	743
2095	Flush Sash Lift .	308	2714	“ “ “ “	743
2100	“ “ “	808	2750	Sash Fast . . .	806
2114	Thumb Knob .	796	P2918	Lock, Mort. Knob	636
2115	“ “ Orn.	735		“ Plain Trim	689
P2200	Latch, Mort. Knob	622		“ Orna “	717
2200 ¹ / ₂	“ Vestibule.	655	P2918 ³ / ₄	“ Mort. Knob	636
P2205	Mortise Bolt . .	631		“ Plain Trim	689
P2230	Lock, Mort. Dead	628		“ Orna. “	717
2320	S. D. Hdl., Plain	743	3310	S. D. Hdl., Plain	741
P2330	Lock, Mort. Knob	635	P3310	Lock, Mort. Knob	634
	“ Plain Trim	687		“ Plain Trim	687
	“ Orna. “	715		“ Orna. “	715
2373	Cellar Sash Fast'r	809	3310B	S. D. Hdl., Plain	741
P2400	Latch, Mort. Knob	626	3314	“ “ “	739
	“ Plain Trim	695	3314B	“ “ “	739
	“ Orna. “	723	P3330	Lock, Mort. Knob	634
P2405	“ Mort. Knob	625		“ Plain Trim	687
	“ Plain Trim	695		“ Orna. “	715
	“ Orna. “	723	W3416	Push Button . . .	897

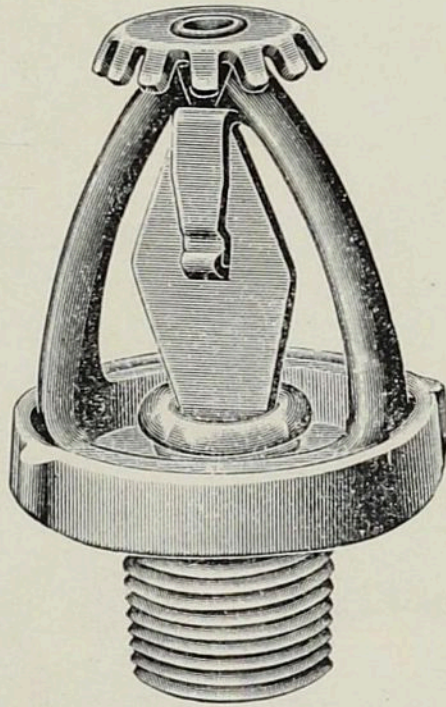
No.	Description.	Page.	No.	Description.	Page.
P3510	Lock, Front Door .	654	P4918	Lock Orna. Trim	721
	“ Plain Trim .	683	P4918 ³ / ₄	“ Mortise Knob	638
	“ Orn. “ .	711		“ Plain Trim	693
P3510 ¹ / ₂	Latch, Vestibule .	654		“ Orna. “	721
	“ Plain “ .	685	5309	“ Rim Knob	618
	“ Orna. “ .	713	5310	“ “ “ .	618
P3530	Lock, Front Door .	654	5311	“ “ “ .	618
P3530 ¹ / ₂	Latch Vestibule . .	654	W5343	Hook Sash Lift . .	806
	“ Plain Trim .	685	W5349	Flush Sash Lift . .	808
	“ Orna. “ .	713	W5850	Cup Escutcheon .	706
P3533	Lock, Front Door .	654	P5918 ¹ / ₂	Lock, Mortise Knob	640
	“ Plain Trim .	683		“ Plain Trim	693
	“ Orna. “ .	711		“ Orna. “	721
P3912 ¹ / ₂	“ Sliding D'r .	650	P5918 ³ / ₄	“ Mortise Knob	640
	“ Plain Trim .	697		“ Plain Trim	693
	“ Orna. “ .	725		“ Orna. Trim	721
P3918	“ Mort. Knob .	638	6000	Esc'n Plates, Plain	705
	“ Plain Trim .	691	W6000	“ “ “	705
	“ Orna. “ .	719	6042	Latch, Duplex Night	667
P3918R	“ Mort. Knob .	638	6066	“ “ “	667
P3918 ³ / ₄	“ “ “ .	638	6270	“ “ Office	669
	“ Plain Trim .	691	6274	“ “ “	669
	“ Orna. “	719	W06310	S.D. Handle, Plain	741
P3918 ³ / ₄ R	“ Mort. Knob	638	W06310B	“ “ “	741
P3924 ¹ / ₂	“ Sliding Door	650	W06314	“ “ “	739
	“ Plain Trim	697	W06314B	“ “ “	739
	“ Orna. “	725	6334	Lock, Duplex Dead	668
P3936 ¹ / ₂	“ Sliding Door	650	6346S	Latch “ Sl. D'r	668
	“ Plain Trim	697	6614	Lock “ Office	669
	“ Orna. “	725	6615	“ “ “	669
4300	“ Rim Dead .	617	6616	“ “ “	669
4305	Latch, Secret Gate	616	W6730	Push Plate	803
4310	“ “ “	616	6850	Plain Cup Escutch'n	706
4620	Lock, Rim Knob	619	6854	“ “ “	706
4620B	“ “ “ .	621	7000	Esc'n Plates, Plain .	705
4630	“ “ “ .	619	W7000	Push Plate	802
P4918	“ Mortise Knob	638		Esc'n Plates, Plain .	705
	“ Plain Trim	693	W7343	Hook Sash Lift . .	806

No.	Description.	Page.	No.	Description.	Page.
W7349	Flush Sash Lift . . .	808	C5	Corner Hinge Plate	847
7415	Push Button . . .	897	C6	" " "	847
7416	" " . . .	897	M	Middle " "	847
W7850	Cup Escutcheon . . .	706	M1	" " "	735
W7854	" " . . .	706	M2	" " "	735
9239	Loose Pin Butt . . .	776	M3	" " "	735
9241	" " " . . .	776	M4	" " "	847
9808	Fast Joint Butt . . .	775	M5	" " "	847
9838	Shutter Butt . . .	772	M6	" " "	847
70850	Cup Escutcheon . . .	706	M7	" " "	847
70854	" " . . .	706	S	Strap Hinge . . .	847
71344	Flush Sash Lift . . .	808	SI	" " . . .	847
71347	" " " . . .	808	S2	" " . . .	847
71349	" " " . . .	808	T	Top Hinge Plate . . .	847
71730	Push Plate . . .	802	T1	" " " . . .	847
16/6314	Store Door Handle . . .	743	T2	" " " . . .	847
B	Bottom Hinge Plate	847	TB1	Top & Bot'm Hinge Plt	734
B1	" " "	847	TB2	" " " " "	734
B2	" " "	847	TB3	" " " " "	734
C	Corner Hinge Plate	847	TB4	" " " " "	734
C1	" " "	847	TB5	" " " " "	734
C2	" " "	847	TB7	" " " " "	734
C3	" " "	847	TB8	" " " " "	734
C4	" " "	847			

Index to Advertisements.

	Page
American Radiator Co., Chicago, (<i>Steam Heating Apparatus</i>).	7
American Sheet & Tin Plate Co., Pittsburgh, (<i>Roofing Tin, Galvanized and Sheet Iron</i>).	4
Bommer Bros., Brooklyn, (<i>Spring Hinges</i>).	11
Colt Co., J. B., New York, (<i>Acetylene Gas Apparatus</i>).	10
Columbia Hardware Co., Cleveland, (<i>Spring Hinges, Etc.</i>).	15
Fuller Co., George A., New York, (<i>Fireproof Building Construction</i>).	6
Gamewell Auxiliary Fire Alarm Co., The, New York, (<i>Interior Fire Alarms</i>).	12
General Fire Extinguisher Co., Providence, (<i>Automatic Sprinkler Equipment</i>).	1
Hammacher, Schlemmer & Co., New York, (<i>Hardware and Tools</i>).	13
Minett Varnish Co., New York, (<i>Japans and Varnishes</i>).	13
New York Belting & Packing Co., Ltd., New York, (<i>Interlocking Rubber Tiling</i>).	14
Peirce, John, New York, (<i>Granite Work, Monumental Structures</i>).	4
Roebing Construction Co., The, New York, (<i>Fireproof Concrete Construction</i>).	8
Standard Publishing Co., The, Boston, (<i>Handbook of Fire Protection</i>).	12
Standard Sanitary Mfg. Co., Pittsburgh, (<i>Porcelain and Enamel Ware</i>).	3
Stanley Works, The, New Britain, Conn., (<i>Wrought Steel Butts, Etc.</i>).	2
Voigtmann & Co., Chicago and New York, (<i>Metal Frames for Wire Glass</i>).	9
Westinghouse Electric & Mfg. Co., Pittsburgh, (<i>Electric Apparatus generally</i>).	5
Wiley & Sons, John, New York, (<i>Publishers</i>).	15

Engineers and Contractors for
The Grinnell
Automatic Fire Apparatus



The Automatic Sprinkler
The Automatic Valve for Dry Pipe Systems
The Automatic Alarm Valve

☐ An approved system of automatic sprinklers soon pays for itself by a saving of 25 to 50 per cent. on the cost of insurance.

☐ Sprinklers were first installed in textile factories, but are now extensively employed to protect Dry Goods and other Stores, Hotels and Office Buildings, Power Houses, Rubber and Celluloid Works, Saw and Planing Mills, Theatres, etc., etc.—in short, we can recall no class of insurable risk which has not been equipped with our protective apparatus.

General Fire Extinguisher Co.

Executive Offices, Providence, R. I.

The Stanley Works

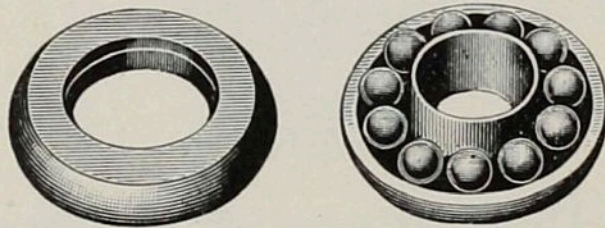
New Britain, Conn.

79 Chambers Street, New York

♣ Makers of ♣

Wrought Steel Butts, Hinges, Door
Bolts, Shelf Brackets, etc.

Ball Bearing Hinges



(Cut of Washer used in Ball Bearing Hinges)

in Wrought Bronze and Steel

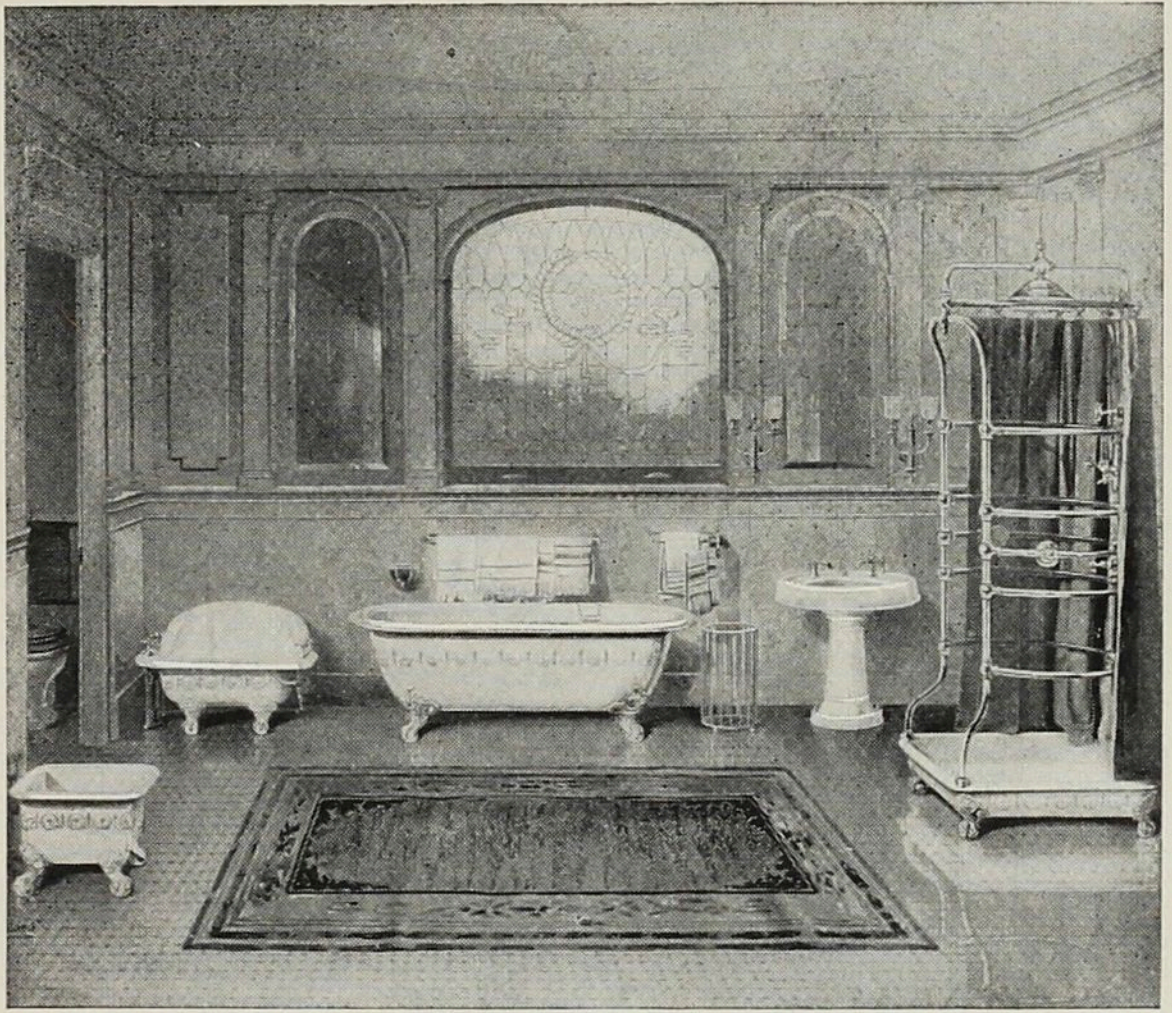
Entire weight of door rests on the balls in
the two washers.

No possible sagging of door.

Door swings easily and noiselessly.

Washer so constructed it does not come
apart in use.

Send for Artistic Booklet



"Standard"
PORCELAIN ENAMELED BATHS
AND
SANITARY WARE

are luxurious and as dainty as fine china
ware. They are the preferred equipment
of discriminating householders. : : :

EXHIBITED AND SOLD EVERYWHERE

100 page Catalogue sent on request

Standard Sanitary Mfg. Co.
PITTSBURGH, U. S. A.

"The Best is the Cheapest"



Trade Mark

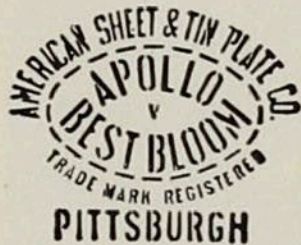
The BEST ROOF is made of

MF Roofing Tin

It has held during the last sixty years the **Most Favored** and leading place in the race for superiority in Roofing Materials

The BEST METAL CORNICES

are made of



Apollo Best Bloom Galvanized Sheets

The trade mark signifies the highest standard of reliability. The easy working qualities of the Metal make it the favorite of the Metal Worker. When in need of galvanized sheets for construction work, don't be satisfied with substitutes, insist on the genuine.

Our Products are for sale by all Metal Houses

American Sheet & Tin Plate Company
PITTSBURGH, PA.

John Peirce

Granite and General Contractor

277 Broadway, New York City

GRANITE WORK of the HIGHEST GRADE

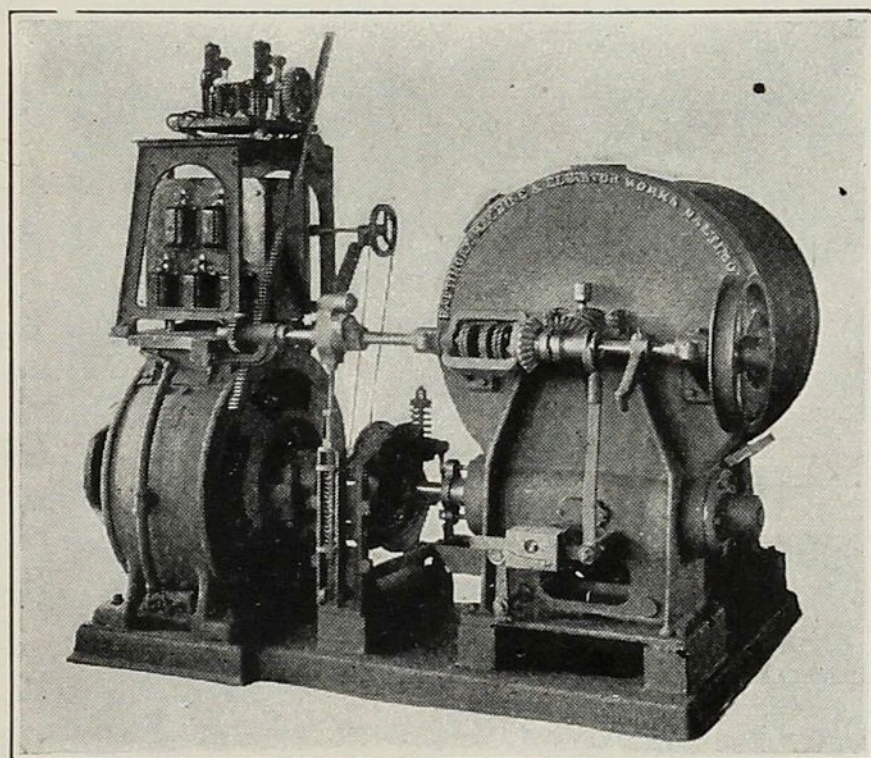
—Builder of the following Monumental Structures—

☐ New Hall of Records, New York City; New U. S. Custom House, New York City; Main Power House Interborough Rapid Transit Co., New York City; U. S. Post Office, Chicago, Ill.; U. S. Post Office, Indianapolis, Ind.; New Granite Dry Dock, U. S. Navy Yard, Portsmouth, N. H.; Academic Group, U. S. Naval Academy, Annapolis, Md.; U. S. Post Office, Buffalo, N. Y., and other large buildings.

Westinghouse

Generators, Motors and Auxiliary Apparatus

For generating and applying electric power
in Hotels, Office Buildings, Public Buildings
and Apartment Houses.



Type S Motor Driving Elevator Hoist

Characterized by the excellency of construction and efficiency of operation which the name Westinghouse implies.

For Particulars Address

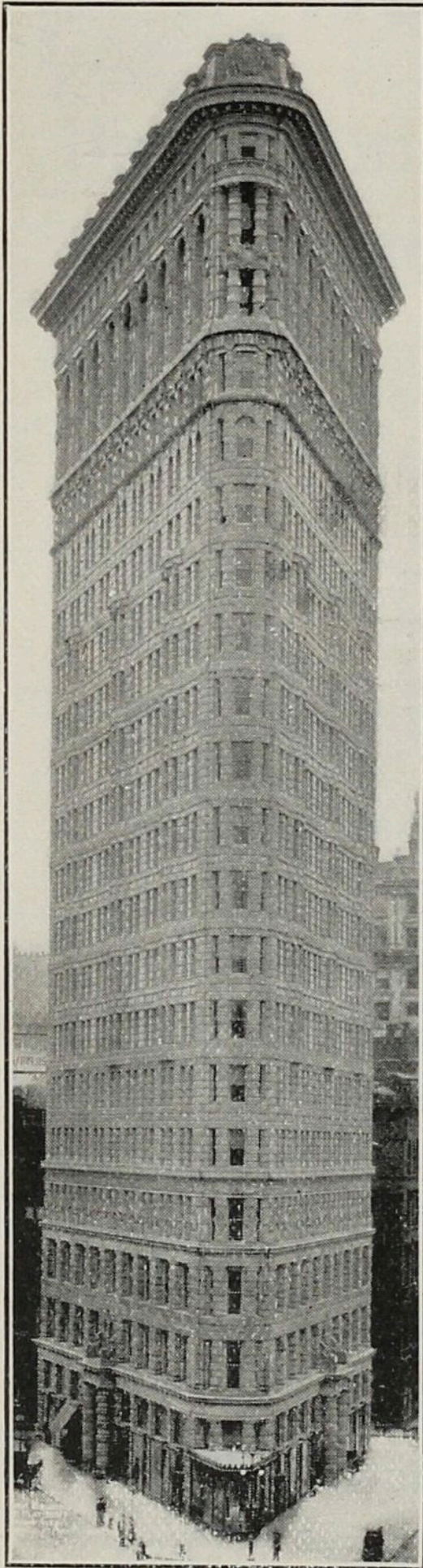
Westinghouse Electric and Mfg. Co.

Sales Offices in All Large Cities

Pittsburg, Pa.

For Canada: Canadian Westinghouse Co., Limited

THE FULLER BUILDING (FLATIRON)



George A. Fuller Company

FIREPROOF BUILDING CONSTRUCTION

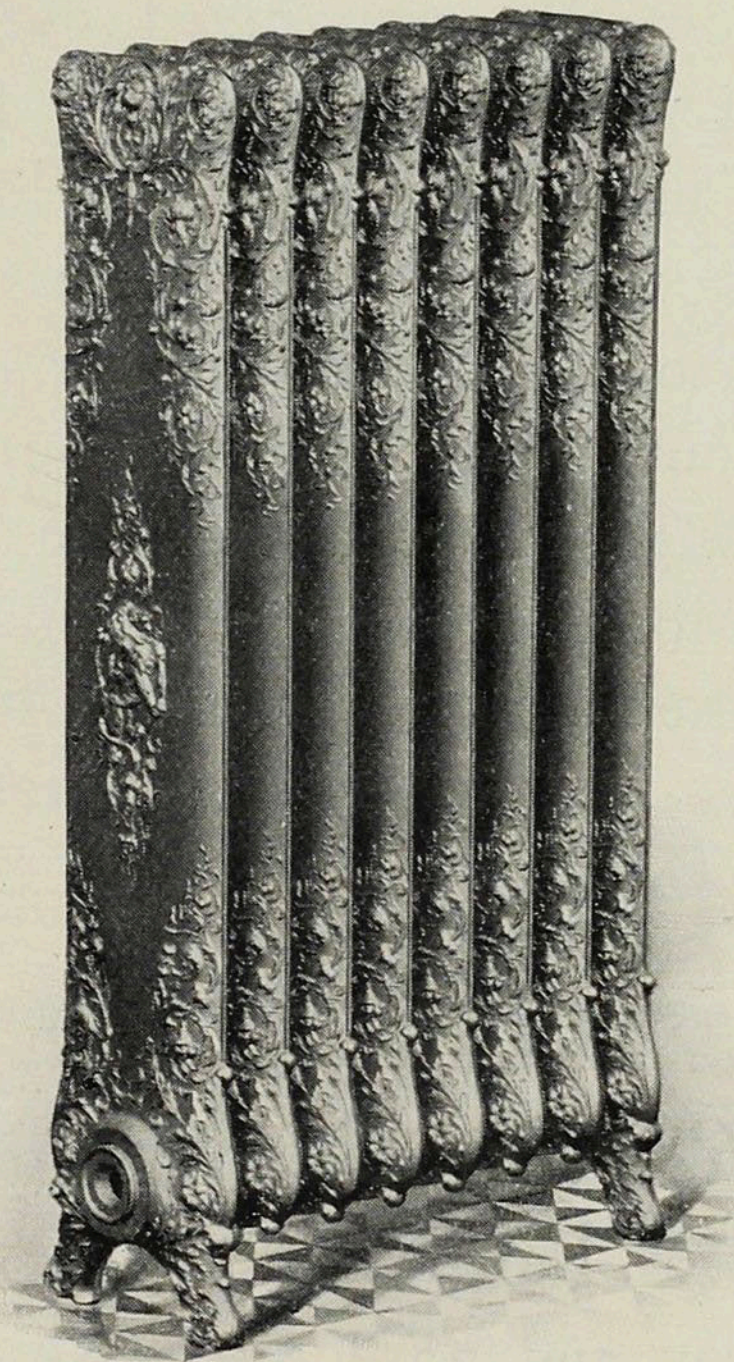
—OFFICES—

NEW YORK Fuller Building
PHILADELPHIA
North American Building
BOSTON Board of Trade
CHICAGO Marquette Building
BALTIMORE 203 North St.
WASHINGTON
Home Life Ins. Building
PITTSBURG
Farmers' Bank Building
ST. LOUIS Fullerton Building

We are the Builders of
over Two Hundred Fireproof
Office Buildings, Hotels,
Apartment Buildings, Depart-
ment Stores, Clubs and
Theatres in the principal
cities of the U. S. A.

A Classic in Iron

Prominent in the line of finer ornamental hardware for homes, etc., stands the VERONA Radiator. Just right for halls, parlors, etc. We have thirty-five other artistic patterns, plain and ornate.



AMERICAN RADIATOR COMPANY

Catalogues mailed free - DEPT. 55, CHICAGO

*A System of
Fire-Proofing that is Fire-Proof*

THE ROEBLING SYSTEM

is now the recognized standard of fire proof construction. It has been used in over 700 buildings. It is the only system that has withstood actual conflagrations without injury and without the necessity of repairing the construction. It has been adopted for the largest department stores, offices and apartment hotels in the world. : : : : :

72 page Illustrated Catalogue on application

The Roebling Construction Co.

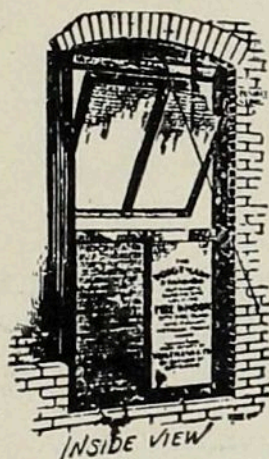
Fuller Building

Broadway and 23rd St., New York

*Philadelphia
Cleveland
St. Louis*

*Boston
Pittsburg
Seattle*

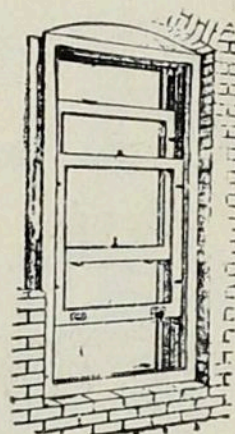
*Buffalo
Chicago
San Francisco*



Increases Rent Values

—
Fire Barriers Affording
Life and Ventilation

—
Decreases Fire
Premiums



The Voigtmann Standard
Automatic Closing and Lock-
ing Windows a Specialty.

The Voigtmann Adjust-
able Guide Window. Interior
View showing Sash Weights.

Voigtmann & Co.

Manufacturers under Patents of
THEIR SPECIALTIES IN

Metallic Window Frames and Sashes

For Carrying Mississippi Wire Glass

In accordance with the requirements demanded
by Fire Insurance Underwriters and Building
Departments. Universally accepted in lieu of
common windows and fire shutters. : : : :

CHICAGO

42 - 54 East Erie Street

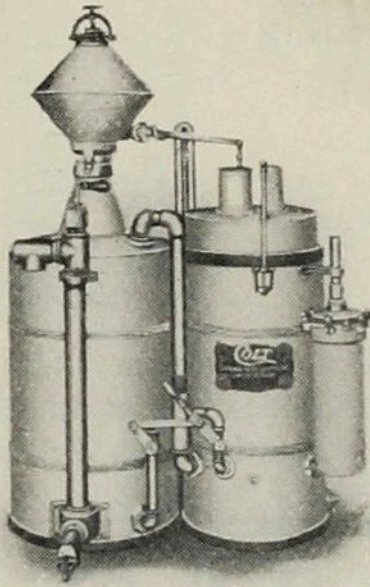
NEW YORK

430 West 14th Street

427 West 13th Street

—
New York Telephone, 771 Chelsea

COLT
TRADE MARK.



Acetylene

==== *The* ====

Ideal Illuminant

solves the problem of
lighting country houses.

☐ Cheaper, better and more efficient than
any other artificial illuminant. : : : : :

====
Send for Catalogue 10.
====

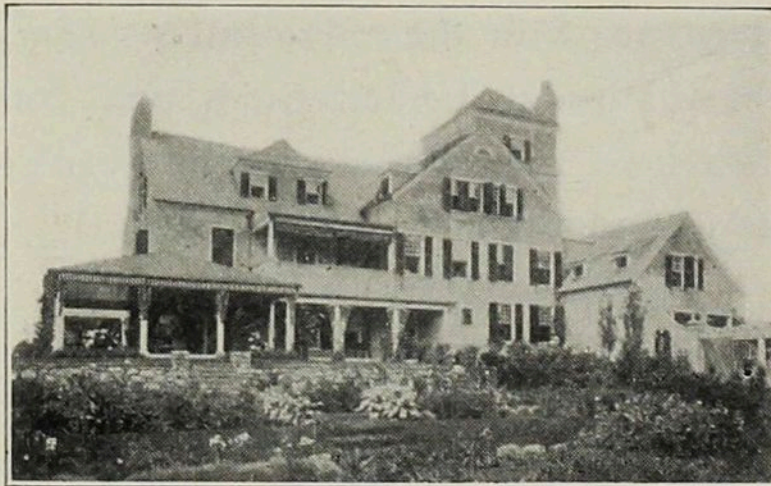
J. B. Colt Company

21 Barclay Street, New York

Philadelphia

Chicago

Los Angeles



Residence of Mr. Henry J. Hardenburgh, Bernardsville, N. J.
Lighted by "Colt" Acetylene.

BOMMER SPRING HINGES

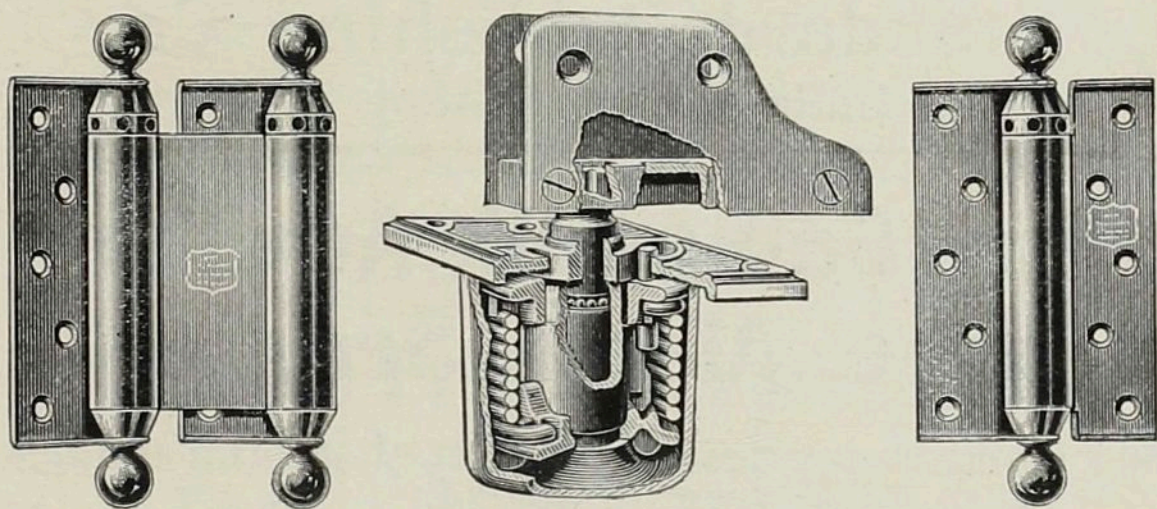
ARE

Quality Goods

But Cost No More than Inferior Kinds

Gold Medal, St. Louis, 1904

Gold Medal, Paris, 1900 Gold Medal, Buffalo, 1901



Spring Hinges lead the strenuous life in Builders' Hardware; no other article in the entire line endures such wear and tear; therefore don't err in judgment, use Bommer Spring Hinges, they stand up to their work.

Bommer Bros. Mfrs., Brooklyn, N.Y.

Established 1876

HANDBOOK of FIRE PROTECTION for IMPROVED RISKS

By EVERETT U. CROSBY and HENRY A. FISKE

¶ A Treatise on Fire Preventing Methods and Fire Fighting Devices. ¶ A Work for Architects, Engineers, Manufacturers and all Interested in Reducing the Fire Hazard. ¶ A Compendium of Underwriters' Rules Requirements, Regulations, Standards, etc. : : : ,

363 Pages. Copiously Illustrated. Bound in Limp Leather.
Price, THREE DOLLARS, postage prepaid

Address—

Standard Publishing Co.

60 India Street, Boston, Mass.

The Gamewell Auxiliary Fire Alarm Service

¶ Furnishes any desired number of interior stations from which fire alarms can be instantaneously transmitted to Fire Department Headquarters.

¶ This service is installed in thousands of hotels, hospitals, office buildings, as well as in mercantile and manufacturing concerns in New York and many other cities.

¶ For particulars address

The Gamewell Auxiliary Fire Alarm Co.

19 Barclay Street, New York City

**Open
Steel
Triangles**
for Draughtsmen

Brown & Sharpe Mfg Co.
Providence, R. I.

Other good things for Draughtsmen, Architects, Builders and for all users of Hardware and Tools.

HAMMACHER, SCHLEMMER & CO.

HARDWARE, TOOLS & SUPPLIES

NEW YORK SINCE 1848

If it's Hardware or Tools, and hard to find, try H. S. & Co.

New Home, 4th Ave. & 13th St., Block South of Union Square

====High Grade====

**Baking Japans
and Varnishes**

====
"The Old Reliable"
====

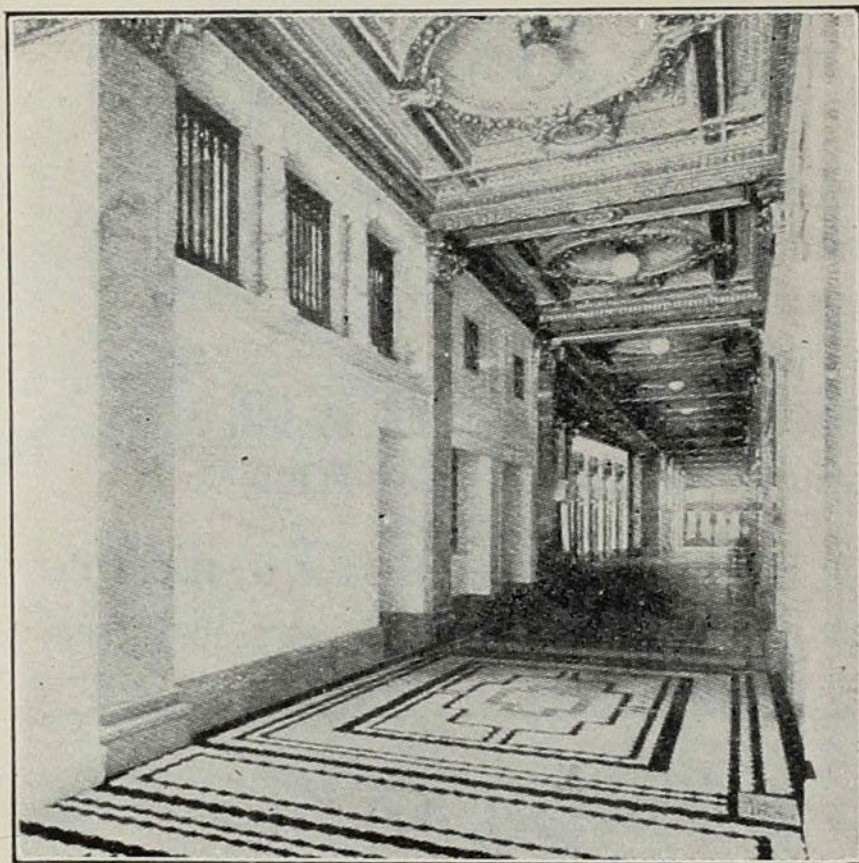
Minett Varnish Company

129 Pearl Street

Established 1844

New York

Interlocking Rubber Tiling



As laid by us in Corridor of Empire Bldg., New York

Is noiseless, non-slippery, waterproof and thoroughly sanitary, more durable than stone or earthen tiles, elegant in appearance, manufactured in a carefully selected variety of colors. Endorsed by the best architects and engineers.

A perfect floor for business offices, banking-rooms, court-rooms, vestibules, halls, billiard-rooms, smoking-rooms, cafes, libraries, churches, hospitals, hotels, bath-rooms, kitchens, etc.

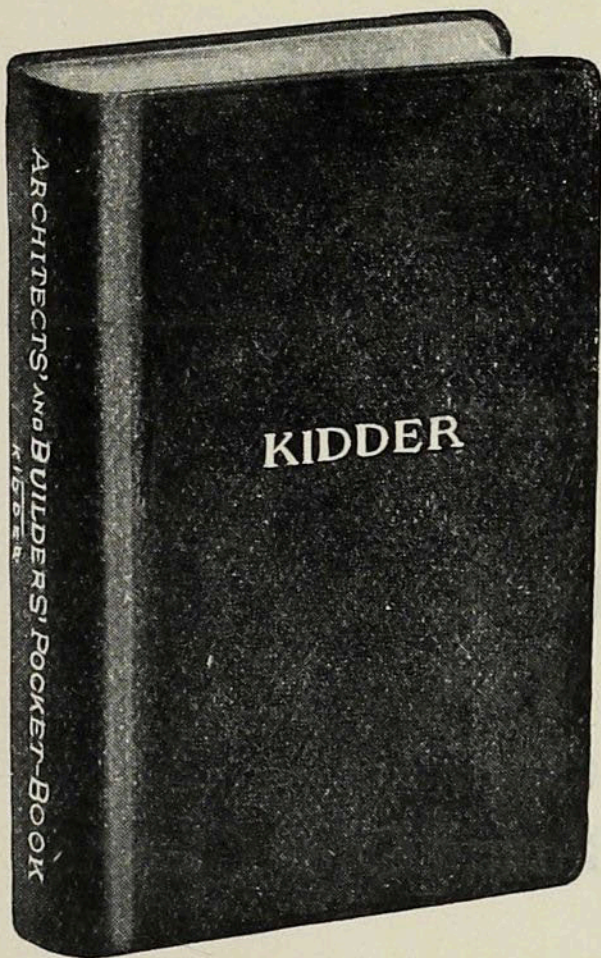
Samples, estimates and special designs furnished upon application.

Sole Manufacturers

**NEW YORK BELTING
and PACKING CO., Ltd.**

91 @ 93 Chambers St., NEW YORK

PHILADELPHIA, 724 Chestnut St. INDIANAPOLIS, 229 S. Meridian St.
BOSTON, . . . 232 Summer St. CHICAGO, 150 Lake St.
BALTIMORE, . 41 S. Liberty St. ST. LOUIS, . . . 411 N. Third St.
SAN FRANCISCO, 605-607 Mission St.



Now Ready

The Fourteenth Edition of
**KIDDER'S ARCHITECTS' AND
BUILDERS' POCKET-BOOK**

Twentieth Thousand
16mo. xix X 1656 pages
1000 figures
Morocco . . \$5.00

JOHN WILEY & SONS
43 and 45 East 19th Street
New York City

**“COLUMBIAN”
SHEET STEEL HINGES**

Made in all finishes, including brass and bronze

Write for catalogue and prices on new lines

**THE COLUMBIAN
HARDWARE COMPANY
CLEVELAND, O.**

New York
San Francisco

Chicago
London

The Yale & Towne Mfg. Co.

MAKERS OF

The Yale Locks,
Builders' Hardware,
Art Metal Work,
Padlocks,
Blount Door Checks,
Cabinet Locks,
Trunk Locks,
Yale Bank Locks,
Yale Lock Boxes,
Chain Blocks, Etc.

New York City

General Offices, 9-11-13 Murray St.

Exhibit Rooms, 242 Fifth Avenue

Local Offices

Chicago 131 Wabash Avenue
Philadelphia 630 Witherspoon Bldg.
Boston 12 Pearl Street
San Francisco Hayward Building

Works: Stamford, Conn.